

**Vertex Standard
VX-4100/4200 Series Radio
To
223 Series Adapter Panels**

Table of Contents

1.0 General	3
2.0 Interconnect Cable Assembly	3
3.0 223 Series Panels	4
3.1 TRA-223 Setup	4
3.1.1 TRA-223 Dip Switch Settings	4
3.2 DSP-223 Software Setup	5
3.2.1 DSP-223 Jumper Settings	5
3.3 IP-223 Setup	6
3.3.1 IP-223 Jumper Settings	7
4.0 Radio Configuration	7

Vertex Standard VX-4100/4200 Series Radios To 223 Series Adapter Panels

1.0 General

This application note is intended to show how to assemble a cable and set up the hardware of different 223 series adapter panels (TRA-223, DSP-223, and IP-223) to the Vertex VX-4100/4200 series mobile radio.

2.0 Interconnect Cable Assembly

A cable assembly is required to connect to the HD DB-15 pin accessory connector of the Vertex VX-4100/4200 to the 223 series adapter panels.

Use Table 1 to manufacture this cable assembly.

NOTE: L-Com cable P/N CHD15MM-x can be purchased to make this cable assembly, wire colors have been provided. Visit www.L-Com.com for further information.

TABLE 1. Cable Assembly Settings

TRA-223 DB-25 Pin	DSP-223 DB-25 Pin	IP-223 DB-25 Pin	VX HD DB-15	Signal	L-Com Cable Wire Color
25	25	25	1	MIC+	ORG/BLK
24	24	24	2	RX+	BLU/WHT
14	14	14	6	PTT	GRN
7	7	7	3	GND	ORG
	8	8	9	D0	GRN/BLK
	21	21	10	D1	ORG/BLK
	9	9	11	D2	BLU/BLK
	22	22	12	D3	BLK/WHT

NOTE: The pins in the gray shaded cells are for frequency change of the Vertex.

NOTE: Shield wires need to be connected between both DB connectors shrouds.

3.0 223 Series Panels

3.1 TRA-223 Setup

3.1.1 TRA-223 Dip Switch Settings

Use Table 2 to set the dip switches for the TRA-223.

TABLE 2. TRA-223 Dip Switch Settings

Switch	Setting	Signal
1	As appropriate	2-Wire = On 4-Wire = Off
2	As appropriate	4-Wire = On 2-Wire = Off
3	As appropriate	Full-Duplex = On Half-Duplex = Off
4	On	Squelch
5	Off	Radio Rx Level On = Speaker Off = High impedance
6	On	Radio Tx Level On = Low Level Off = High Level
7	On	Ground on PTT Relay Common
8	Off	Ground on Monitor Relay Common

3.2 DSP-223 Software Setup

Using Figure 2, configure the DSP-223 for channel change using the digital outputs.

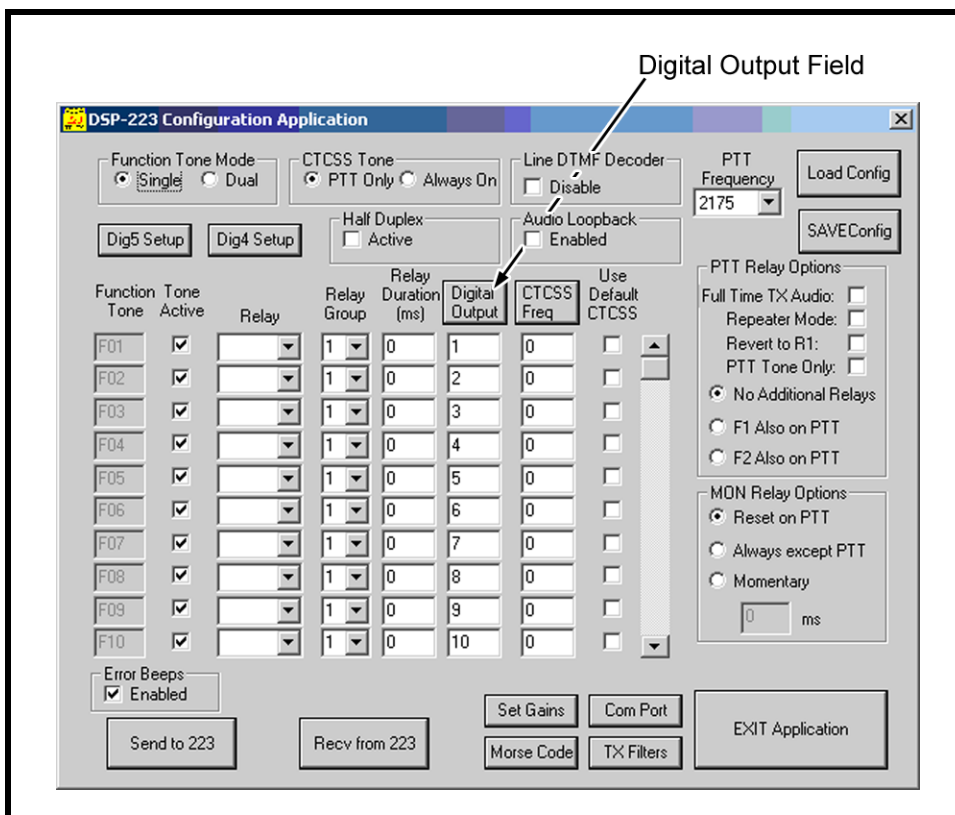


FIGURE 1. DSP-223 Configuration Application

3.2.1 DSP-223 Jumper Settings

To set the **DSP-223 Jumpers**, do the following

1. Set to the **A position**:
 - J14, J15, J22, J23, J24, J25, and J27.
2. Set to the **B position**:
 - J12 and J13.
3. Solder close **JP2**.
4. Set J16 to the **center pin** (hanging).
5. For selecting **2- or 4-wire operation**:
 - J19, J20, and J21.

REFERENCE: For more information, see the DSP-223 Technical Manual (P/N 803274) DSP to Console Line Connection section. This document is available for download at www.telex.com/Downloads/.

3.3 IP-223 Setup

Set up the desired IP-223 line's jumpers for Local radio control.

To **set up the IP-223**, do the following:

1. Using Figure 2, configure the IP-223 for channel change using the **digital output** field.
2. Select the **RX AGC** check box.

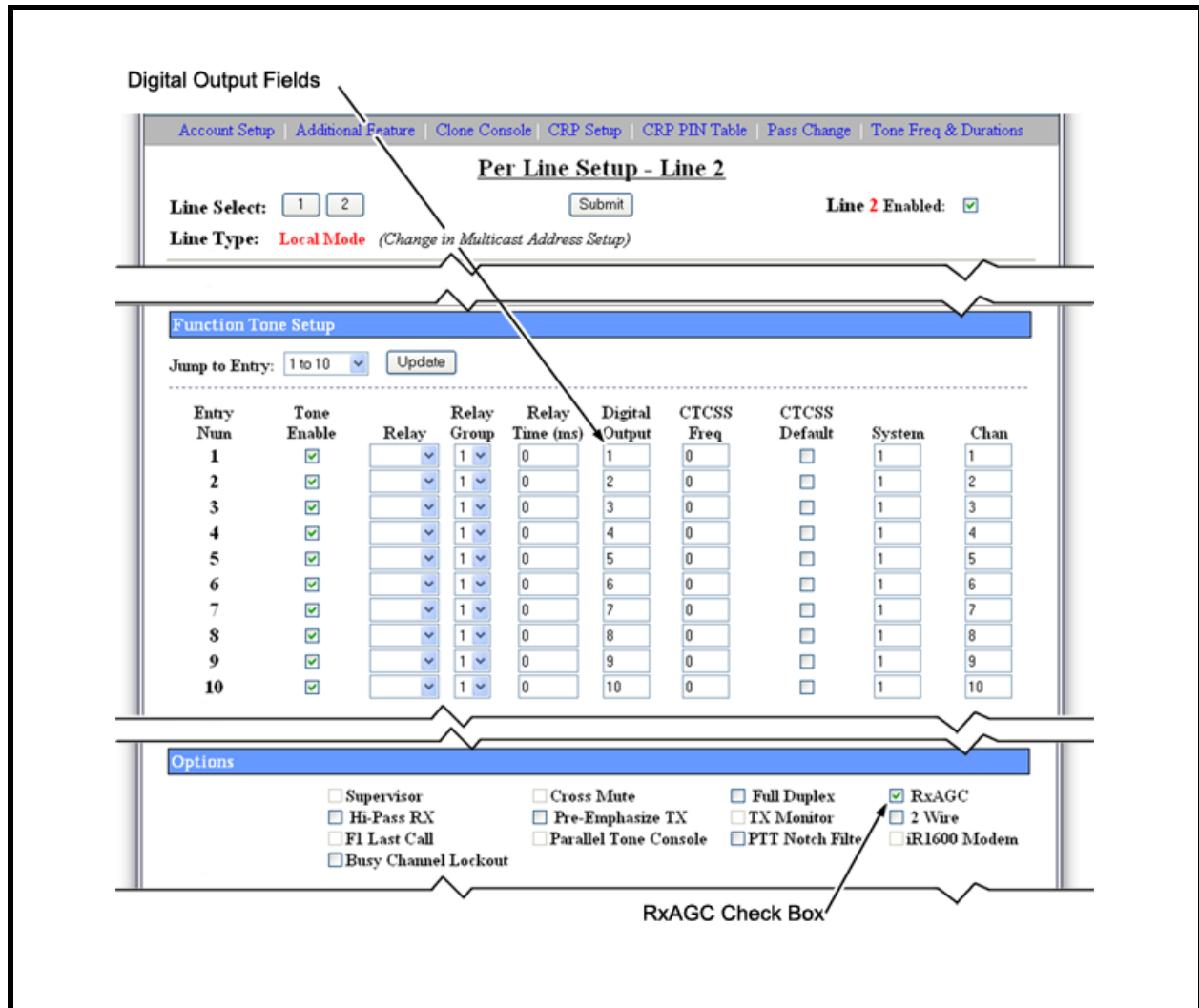


FIGURE 2. Per Line Setup Window

3.3.1 IP-223 Jumper Settings

Using Figure 3, set the IP-223 jumpers for the desired line.

TABLE 3. IP-223 Jumper Settings

Line 1	Jumper Setting	Line 2
J33, J34	B = 4-Wire	J5, J6
J16, J21	A = Single Ended	J19, J20
J14	Hanging on Center Pin = 10K Ohm	J24
J3, J9, J11	A = Single Ended	J25, J28, J29
J13	B = High	J27
J17, J22	B = 600 Ohms	J10, J15
J8	Hanging on Center Pin = No Pull-up Voltage	J30

4.0 Radio Configuration

Use the radio's configuration software.

To **configure the radio**, do the following:

1. On the Miscellaneous window, from the External PTT drop down menu, select **Enabled**.

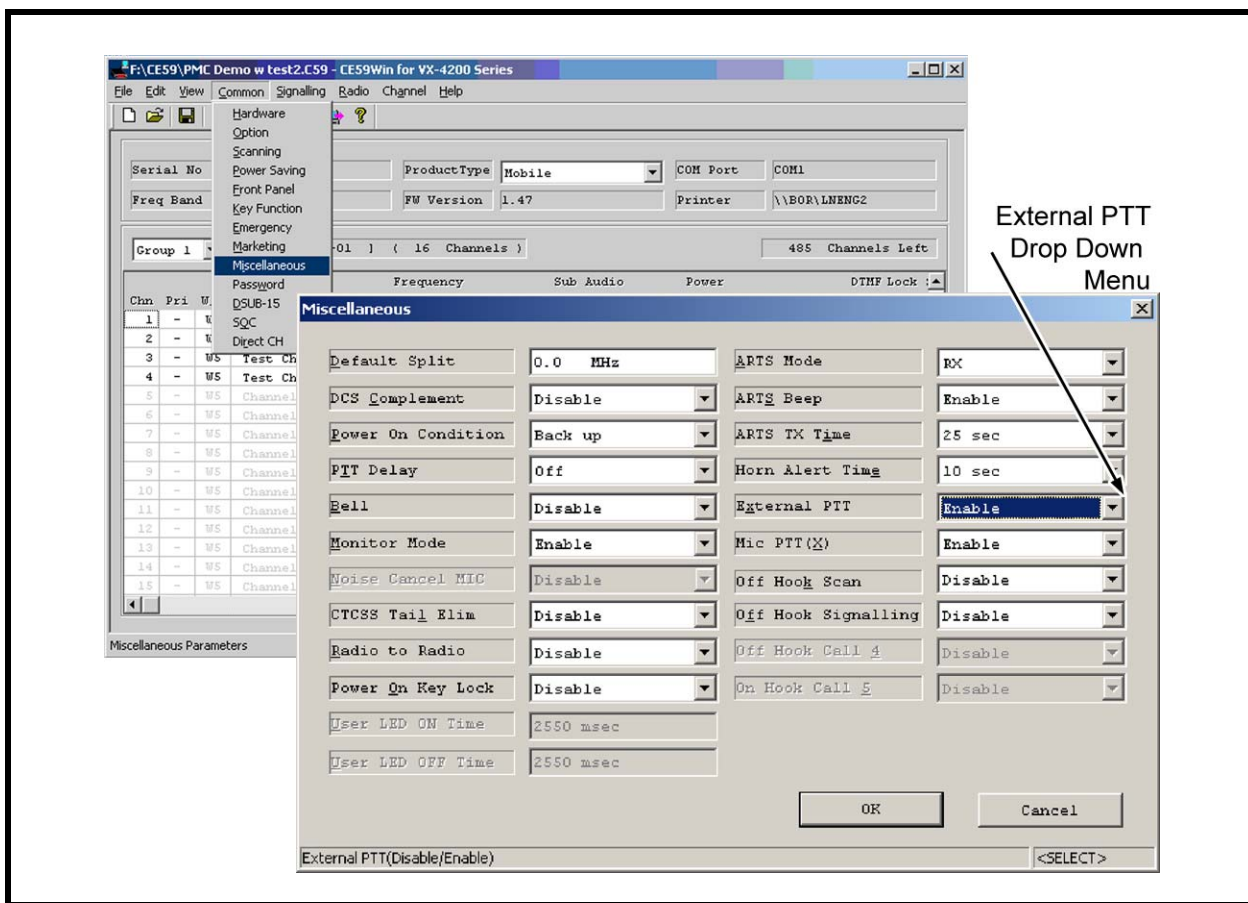


FIGURE 3. External PTT

2. On the DSUB-15 window, configure the ACC I/O Ports for channel change.

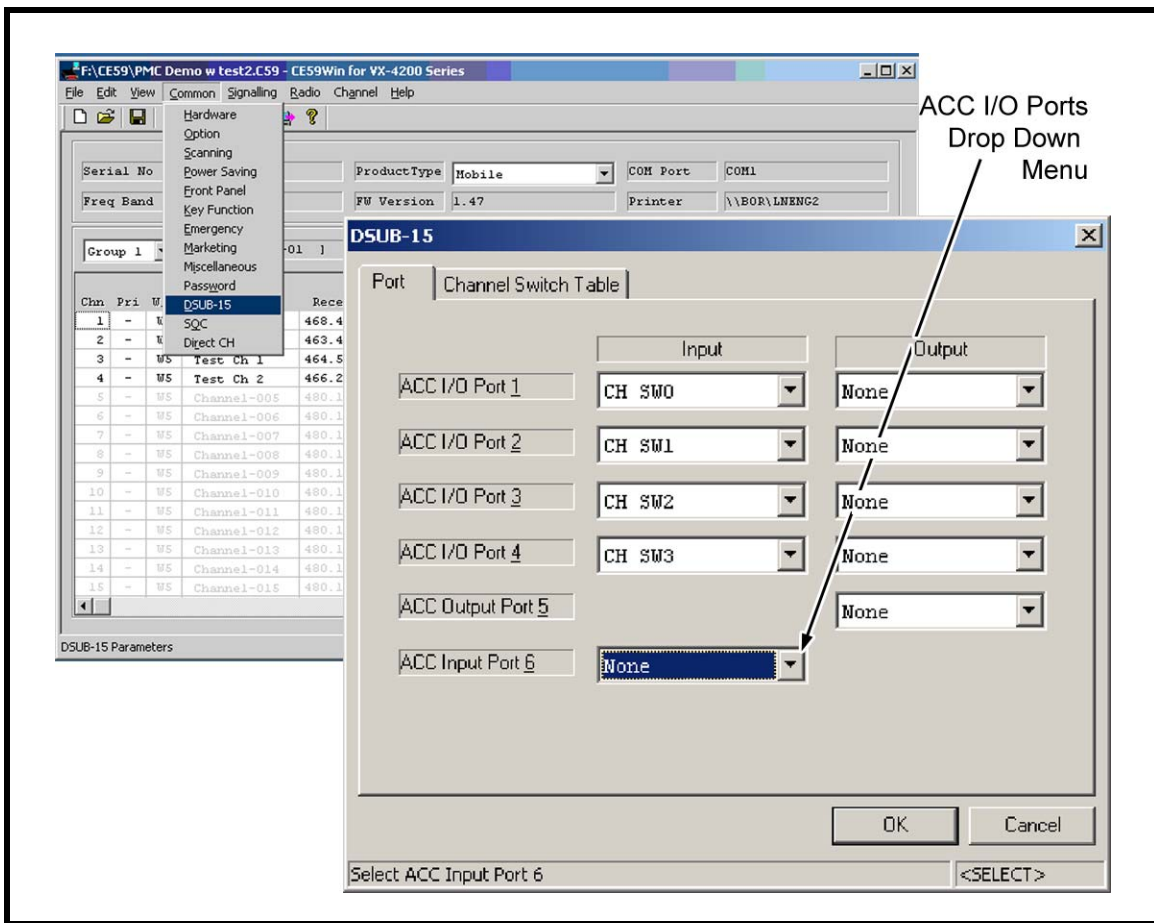


FIGURE 4. ACC I/O Ports Configuration

- In the Channel Switch Table, set the **desired channel/frequency**. Up to 16 is allowed.

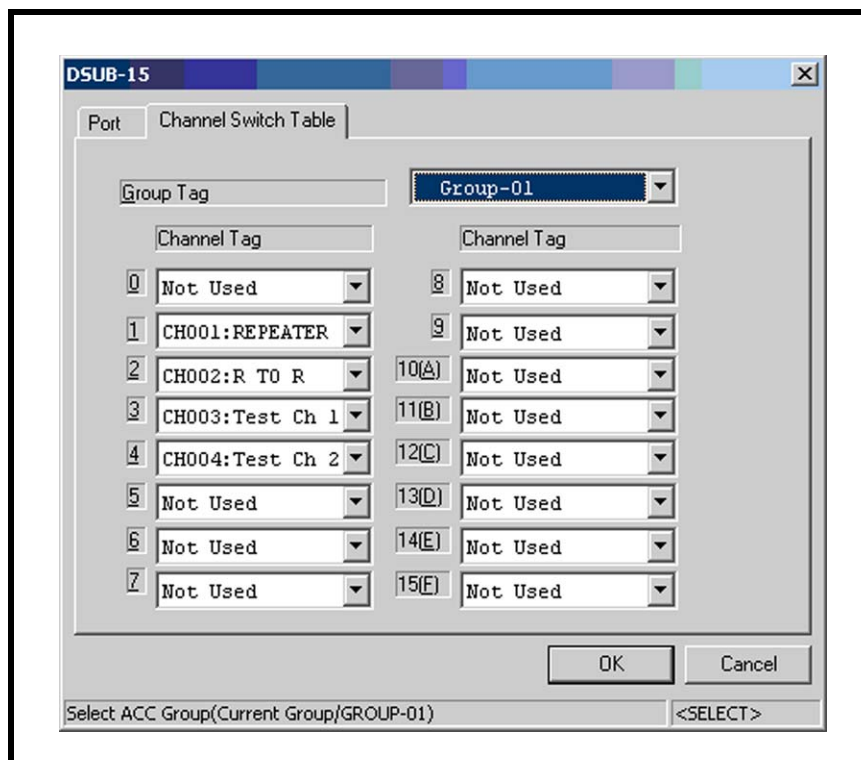


FIGURE 5. DSUB-15 Channel Switch Table

- Save the **radio configuration**.

Revision History		
Document Title: Vertex Standard VX/4100/4200 Series Radios to 223 Series Adapter Panels		
Document Number: AN-DISPATCH-018		
Revision	Change Description	Date
A	Update brand, format and new document number.	01-OCT-2009

Suggestions or comments:

Contact technical support with suggestions or comments concerning this application note.

Technical Support:

Email: TelexDispatchtechsupport@us.bosch.com

Fax: 1-402-467-3279

Phone: 1-800-898-6723

Bosch Security Systems, Inc.
8601 East Cornhusker Highway
Lincoln Nebraska 68507

Phone: (800) 752-7560 Fax: (402) 467-3279

Email: Telexdispatch@us.bosch.com

Web: www.telex.com

Downloads: www.telex.com/Downloads/
