

INSTRUCTION SHEET

General

The Model L-351 line termination module contains two isolation transformers and may be used to interface four-wire systems. Solder bridges J1 and J2 provide proper termination impedance for your system. The primary and secondary of both transformers are center-tapped for systems requiring other impedances. Refer to Figures 1 and 2.

The Model L-351 uses solder bridging gaps for easily removing the optional loading resistors, R1 and R2.

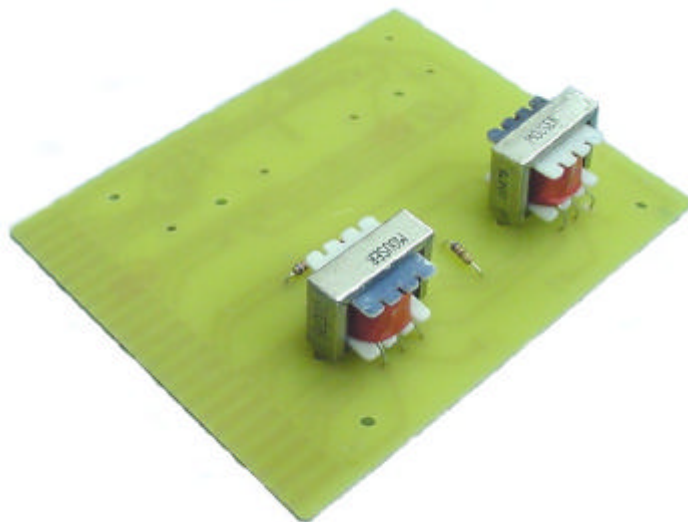
Installation

This unit is supplied with a card-edge connector and is normally used with Telex Vega Model 211 rack panel.

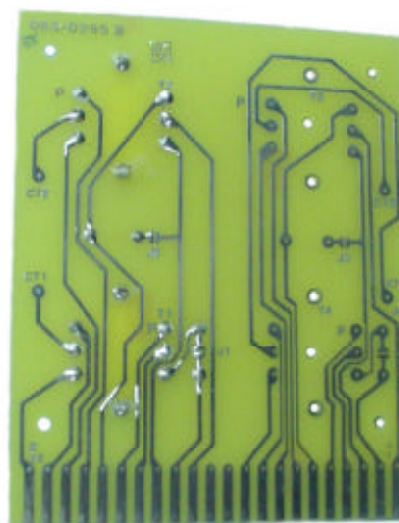
Avoid mounting in high-temperature or strong magnetic or RF field areas. **DO NOT** mount in close proximity to RF power output amplifiers or power transformers.

Warranty (Limited)

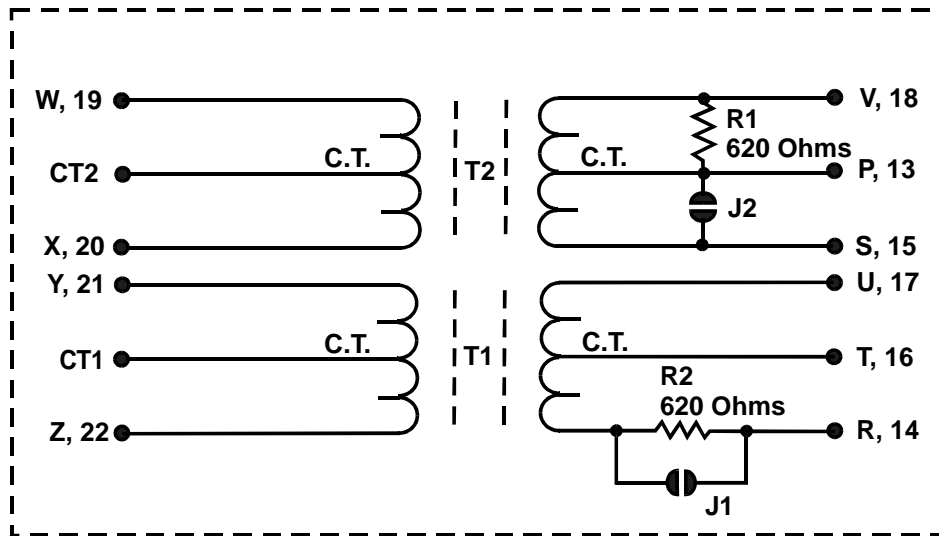
All Telex Communications, Inc. Manufactured Vega Signaling products are guaranteed against malfunction due to defects in materials and workmanship for three years, beginning at the date of original purchase. If such a malfunction occurs, the product will be repaired or replaced (at our option) without charge during the three-year period, if delivered to the Telex factory. Warranty does not extend to damage due to improper repairs, finish or appearance items, or malfunction due to abuse or operation under other than the specified conditions, nor does it extend to incidental or consequential damages. Some state do not allow the exclusion or limitation of incidental or consequential damages, so the above limitation may not apply to you. This warranty gives the customer specific legal rights, and there may be other rights which vary from state to state.



Top View



Bottom View



J1 AND J2 LOCATED ON SOLDER SIDE OF BOARD

Figure 1 Schematic of L-351

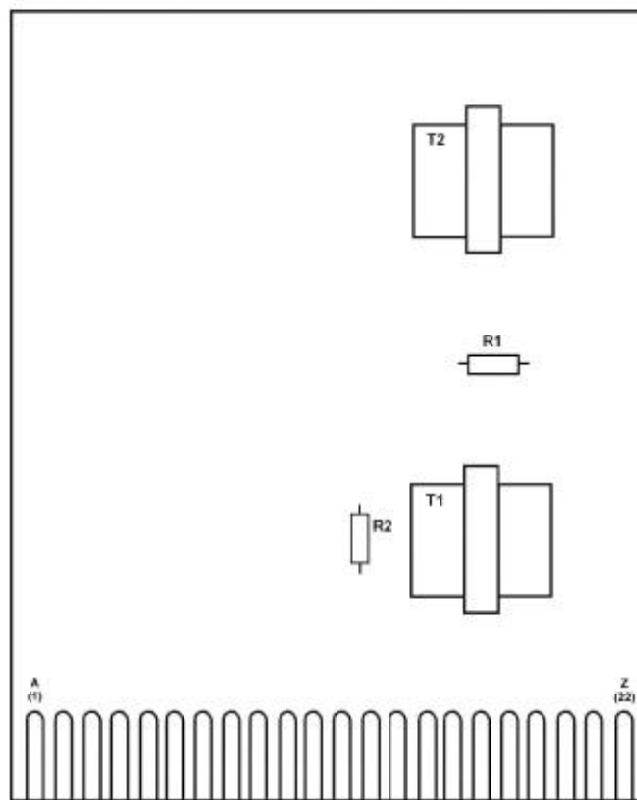


Figure 2 Parts Layout



TELEX® Signaling Product Company

8601 East Cornhusker Highway, Lincoln, NE 68507

Phone: (402) 465-7026 / (800) 752-7560 Fax: (402) 467-3279

E-mail: vega@telex.com, Web: www.vega-signaling.com

October 2002