

Kenwood P25 Interface for IP-224

PROPRIETARY NOTICE

The product information and design disclosed herein were originated by and are the property of Bosch Security Systems, Inc. Bosch reserves all patent, proprietary design, manufacturing, reproduction, use and sales rights thereto, and to any article disclosed therein, except to the extent rights are expressly granted to others.

COPYRIGHT NOTICE

Copyright 2018 by Bosch Security Systems, Inc. All rights reserved. Reproduction, in whole or in part, without prior written permission from Bosch is prohibited.

*All other trademarks are property of their respective owners.

WARRANTY NOTICE (LIMITED)

For warranty and service information, refer to www.telex.com/warranty.

FACTORY SERVICE CENTER

Factory Service Center
Bosch Security Systems, Inc.
Radio Dispatch Products
8601 East Cornhusker Highway
Lincoln, Nebraska, 68507

CONTACT INFORMATION

Sales:

Phone (800) 752-7560

Fax (402) 467-3279

E-mail..... TelexDispatch@us.bosch.com

Customer Service Repair:

E-mail..... repair@us.bosch.com

Phone..... (800) 553-5992

Technical Support:

Knowledge Database .. <http://knowledge.boschsecurity.com/>

LiveChat www.telex.com/us/dispatch/support

E-mail TelexDispatchtechsupport@us.bosch.com

Web www.telex.com

CLAIMS

No liability will be accepted for damages directly or indirectly arising from the use of our materials or from any other causes. Our liability shall be expressly limited to replacement or repair of defective materials.

WARNING

This is a Class A product. In a domestic environment this product may cause radio interference in which case the user may be required to take adequate measures.

Do not open the unit. No user serviceable parts are contained within. Bosch cannot be responsible for damage. If the unit is opened, the warranty can be voided.

OPENSSL PROJECT

This product includes software developed by the OpenSSL Project for use in the OpenSSL Toolkit (<http://www.openssl.org/>). This product includes cryptographic software written by Eric Young (ey@cryptosoft.com). This product includes cryptographic software written by Tim Hudson (tjh@cryptosoft.com).

Table of Contents

1.0 Introduction	5
2.0 Hardware Requirements.....	5
3.0 Software Requirements.....	5
4.0 Supported Features	6
5.0 Known Limitations.....	6
5.1 Radio Remote Monitor	6
5.2 Radio Status Request.....	6
6.0 Cable Diagram	7
7.0 Radio Programming Application Setup	8
7.1 Serial Communications Setup.....	8
7.2 External PTT and COR Setup.....	10
7.3 Scan Setup	11
8.0 IP-224 Access Key Installation	12
9.0 IP-224 Setup	14
10.0 C-Soft Designer Setup	16

1.0 Introduction

The Kenwood P25 radio interface is designed as an add-on option in the Telex Radio Dispatch system. This application guide describes the Telex Radio Dispatch Kenwood P25 feature set and how to configure the interface for the IP-224 and C-Soft.

NOTE: For more information, see the IP-224 Technical Manual (P/N F.01U.218.562), the C-Soft Software Console Administrator's Guide (P/N F.01U.218.561), and the radio manufacturer's technical documentation.

2.0 Hardware Requirements

- IP-224 Ethernet Adapter Panel (P/N F.01U.306.547)
- IP-224 Cable - Kenwood TK-X150/X180, 5X10, and NXDN radios (P/N F.01U.165.540)
- Kenwood TK-5x10 P25 Radio

NOTE: See IP-224 Firmware Release Notes for the radio firmware revision tested.

3.0 Software Requirements

- C-Soft version 6.500 or later
- IP-224 version 2.300 or later
- IP-224 Advanced Interface Option (Export) or Advanced Interface Option (North American) Access Key
- Telex System Manager (TSM) 2.300 or later
- Windows 7 (32-bit or 64-bit)
- Windows 8.1
- Windows 10
- Kenwood KPG-95DGN Field Programming Unit

4.0 Supported Features

Kenwood P25 Supported Features					
Feature	Analog Support	Digital Support	Feature	Analog Support	Digital Support
Channel/Talkgroup Change	Yes	Yes	Emergency Acknowledgement	No	No
Zone Change	No	No	Encryption On/Off	Yes	Yes
			GPS Read	No	No
Group Call	Yes	Yes	GPS Trigger On/Off	No	No
Private Call	Yes	Yes	Monitor On/Off	Yes	Yes
			Radio Call Alert	No	No
ANI Decode	Yes	Yes	Radio Check	No	No
Call Alert Decode	No	No	Radio Enable/Disable	Yes	Yes
Emergency Decode	Yes	Yes	Radio Select Call	Yes	Yes
Status Message Decode	Yes	No	Radio Remote Monitor	No	*
Text Message Decode	No	No	Radio Send Text Message	No	No
			Radio Status (Send Status Message)	Yes	No
Query Encryption	Yes	Yes	Radio Status Request	Yes	*
Query Monitor	Yes	Yes	Scan Add/Delete	Yes	Yes
Query Scan	Yes	Yes	Scan On/Off	Yes	Yes
Query Talk Around	Yes	Yes	Talk Around On/Off	Yes	Yes

**Not fully supported, see the Known Limitations section.*

NOTE: The above list of features are supported when using the latest version of C-Soft. Hardware IP Consoles only support the following:

- Channel/Talkgroup Change
- ANI Decode
- Emergency Decode
- Status Message Decode
- Encryption On/Off
- Monitor On/Off
- Scan On/Off
- Talk Around On/Off

5.0 Known Limitations

5.1 Radio Remote Monitor

For P25 Systems, this feature is only available on P25 Trunking channels.

5.2 Radio Status Request

For P25 systems, this feature is only available on P25 Trunking channels.

6.0 Cable Diagram

The IP-224 Cable - Kenwood TK-X150/X180, 5X10, and NXDN radios allows the IP-224 to serially control a Kenwood TK-5x10 P25 radio.

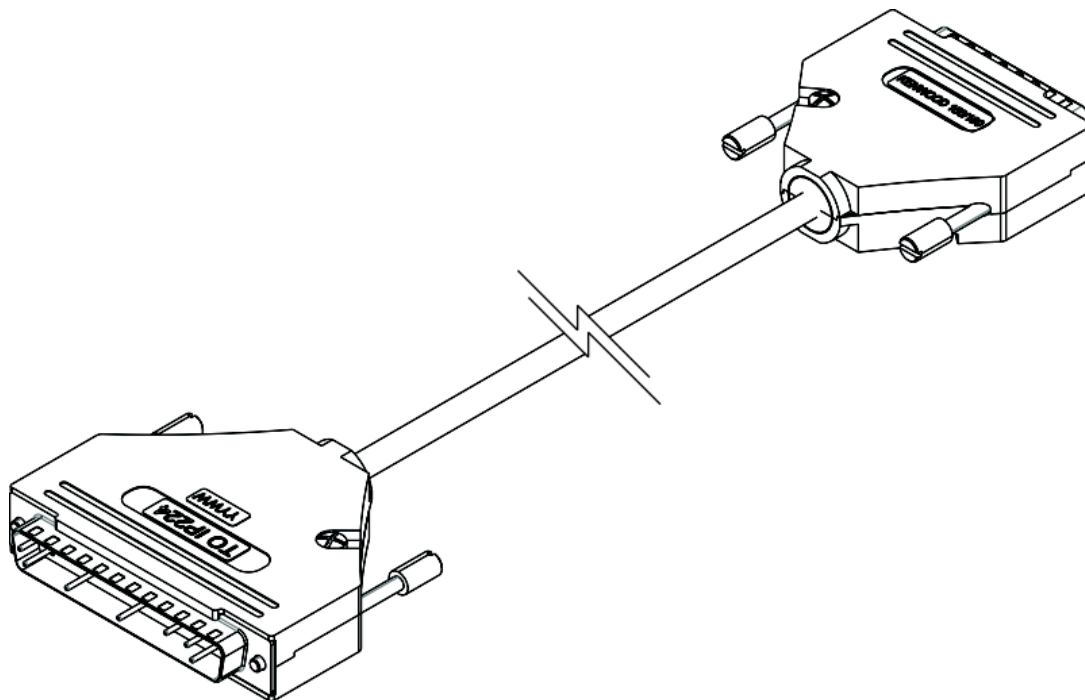


FIGURE 1. Kenwood Interface Cable

Cable diagram for Kenwood P25 Radio and IP-224 Interface			
Function	Kenwood TK-5x10	IP-224	Function
RXD2	PIN 2	PIN 17	RS-232/TTL TXD
TXD2	PIN 3	PIN 36	RS-232/TTL RXD
GND	PIN 7	PIN 29	GROUND
GND	PIN 7	PIN 5	PTT RELAY COM CONTACT
Ext. MIC Input	PIN 6	PIN 1	TX+ AUDIO
RX Output	PIN 17	PIN 20	RX+ AUDIO
AUX Input	PIN 12	PIN 24	PTT RELAY N.O CONTACT
AUX Output	PIN 20	PIN 15	COR INPUT

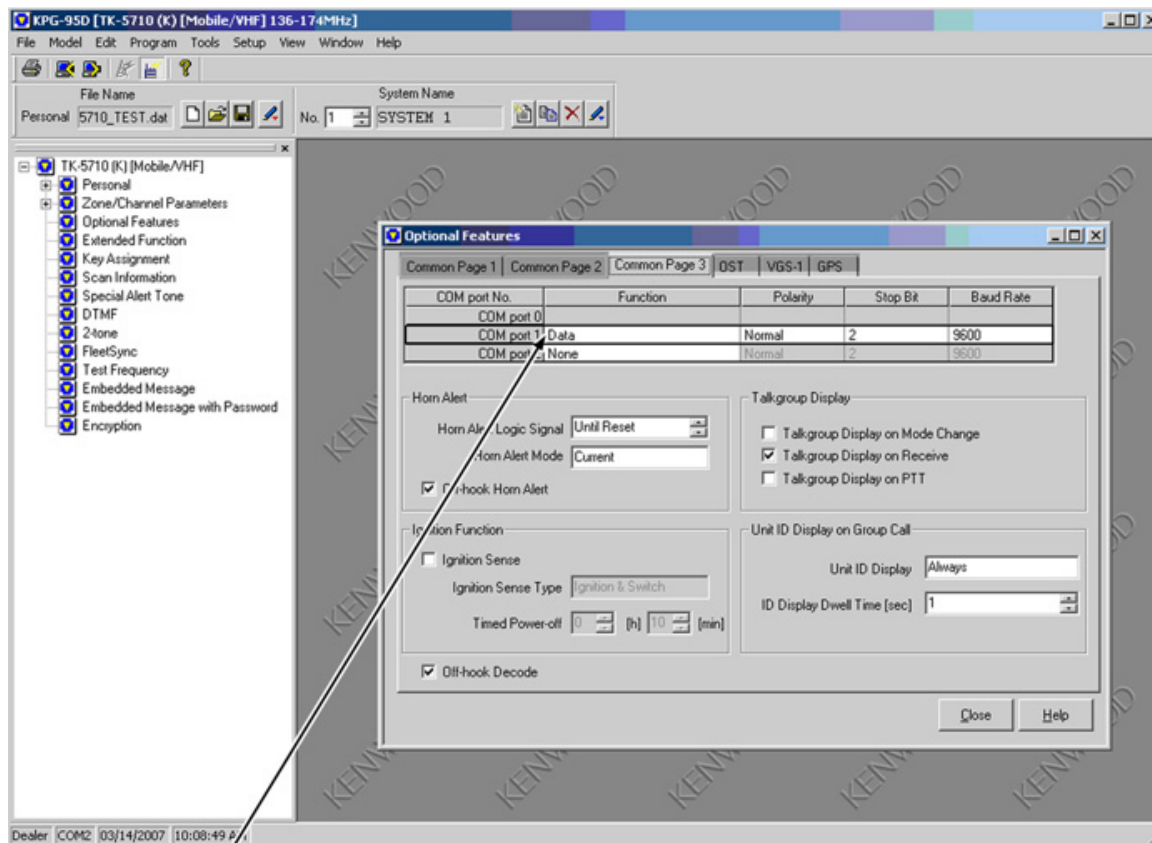
7.0 Radio Programming Application Setup

The Kenwood KPG-95DGN Field Programming Unit is used to configure the Kenwood P25 radio to interface properly with the IP-224.

7.1 Serial Communications Setup

To **configure the Serial Communications**, do the following:

1. From the left navigation, select **Optional Features**.
The Optional Features window appears.
2. Select the **Common Page 3** tab.
The Common Page 3 window appears.



COM Port 1 fields

3. In the Function field for COM port 1, select **Data**.
4. In the Polarity field for COM port 1, select **Normal**.
5. In the Stop Bit field for COM port 1, select **2**.
6. In the Baud Rate field for COM port 1, select **9600**.
7. Click **Close**.

8. From the left navigation, select **FleetSync**.
The FleetSync window appears.
9. Select the **General 1** tab.
The General 1 window appears.

FleetSync

General 1 | General 2 | Parameter | ID List | Status List | Target | GPS

Fleet (Own) 100
ID (Own) 1000
Unit ID Encode Block -
FleetSync Baud Rate [bps] 1200
Emergency Status Response None
Message Display Type Alternate
PC Interface Protocol Version 2

☐ FleetSync II
☒ Manual Dialing
☐ Status 80 - 99 (Special)
☐ Selective Call Alert LED
☒ Interfleet Call
☒ PTT ID Sidetone
☒ Caller ID Display

☐ Group ID

No.	Group ID
1	
2	
3	
4	
5	
6	
7	
8	
9	
10	

☒ Stun Status Validation

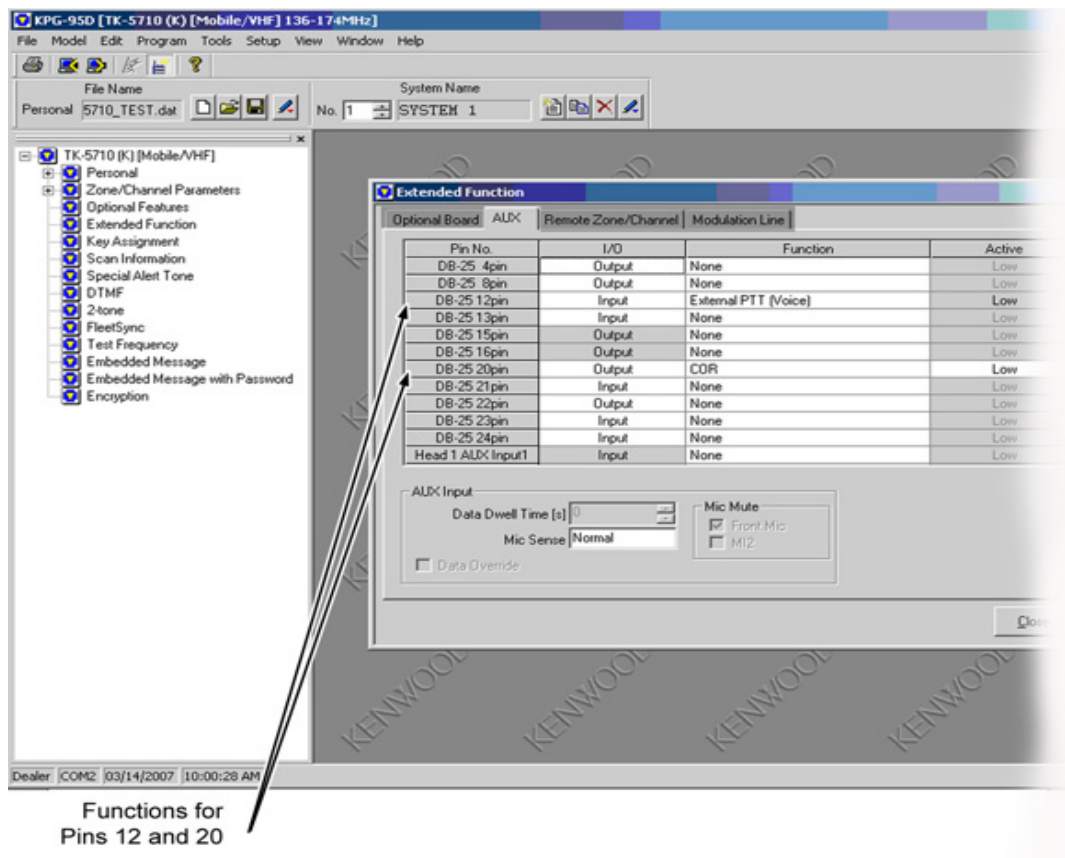
Close Help

10. In the PC Interface Protocol field, select **Version 2**.
11. Click **Close**.

7.2 External PTT and COR Setup

To **configure** the External PTT and COR, do the following:

1. From the left navigation, select **Extended Function**.
The Extended Function window appears.
2. Select the **AUX** tab.
The AUX window appears.



Under I/O

3. In the DB-25 12pin field, select **Input**.
4. In the DB-25 20pin field, select **Output**.

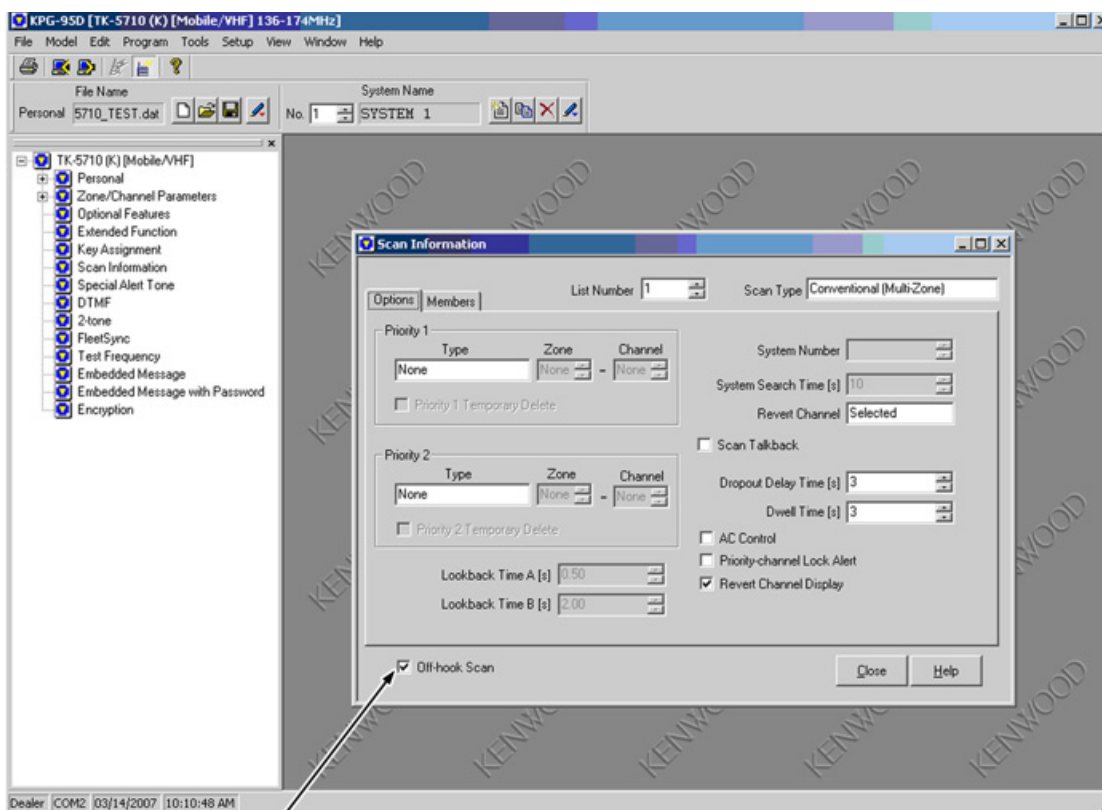
Under Function

5. In the DB-25 12pin field, select **External PTT**.
6. In the DB-25 20pin field, select **COR**.
7. Click **Close**.

7.3 Scan Setup

To **configure Scan**, do the following:

1. From the left navigation, select **Scan Information**.
The Scan Information window appears.
2. Select the **Options** tab.
The Options window appears.



Off-hook Check Box

3. Select the **Off-hook Scan** check box.
4. Click **Close**.

8.0 IP-224 Access Key Installation

The Kenwood P25 radio interface requires an additional Advanced Interface Option (Export) or Advanced Interface Option (North American) on the IP-224.

NOTE:

- The Advanced Interface Option (Export) or Advanced Interface Option (North American) Access Key must be purchased before you can activate the Kenwood 5x10 Serial Type. The Advanced Interface Option (Export) or Advanced Interface Option (North American) requires an access key to be generated specifically for each IP-224.
- If the Advanced Interface Option (Export) or Advanced Interface Option (North American) Access Key was purchased as a factory installation [(F.01U.347.906) IP-224 Radio Gateway Advanced Options Export or (F.01U.347.907) IP-224 Radio Gateway Advanced Options NA (factory installed)], the access key was activated by the factory prior to shipping.
- Activating the Advanced Interface Option (Export) or Advanced Interface Option (North American) via the IP-224 web interface is only required if this is a field installation [(F.01U.343.868) IP-224 Field Code Advanced Options Export or (F.01U.343.869) IP-224 Field Code Advanced Options NA (customer purchased option)].

To activate the **Advanced Interface Option (Export)** or **Advanced Interface Option (North American)** Access Key, do the following:

1. Open the **IP-224** webpage.
2. From the left navigation, select **Additional Features**.
The Additional Features page appears.

TELEX IP-224

- Home
- Ethernet Setup
- Multicast Setup
- Hardware Setup
- Gain Setup
- Per Line Setup
- Crosspatch Setup
- Account Management
- Backup & Restore
- Firmware Upgrade
- Additional Features**
- Save Parameters
- System Status

SUCCESS: Features are now available. Save Parameters step still required.

ACCESS ADDITIONAL FEATURES

Access Key:

Feature Name	State
Advanced Interface Option (North American)	Enabled

Serial Type	Available
EFJ 5300/VMx00	Yes
Hytera MD782	Yes
Hytera MT680	Yes
Icom	Yes
iDEN	Yes
Kenwood 5x10	Yes
Kenwood NEXEDGE	Yes
Kenwood NX-5x00	Yes
Kenwood x150	Yes
Kenwood x180	Yes
Kenwood x80	Yes
Kenwood x90	Yes
MOTOTRBO Interface*	Yes
MTRBi	Yes
PowerTrunk	Yes
Sepura	Yes
Serial Over IP	Yes
Sprint Direct Connect	Yes
Tait TM91xx/TM94xx	Yes
Tait TM93xx	Yes
Telex Generic	Yes

* MOTOTRBO Interface is only available on one line with the Advanced Interface Option (North American)

3. In the Access Key field, enter the **32-character access key**.
4. Click the **Submit** button.
The changes are sent to the IP-224 in temporary storage.
5. From the left navigation, select **Save Parameters**.
The Save Parameters page appears.
6. Click the **Save Parameters** button.
Changes are now permanently saved to the IP-224 console.

9.0 IP-224 Setup

To **configure the IP-224**, do the following:

1. Open the **IP-224 web application**.
The IP-224 web page appears.
2. From the left navigation, select **Multicast Setup**.

TELEX IP-224

Name: Telex IP-224
MAC: 00:08:7C:70:09:0A
HW: 1.000 FW: 1.204
SN: 224120268 Checksum: 70368561

TELEX
Radio Dispatch

Submit Auto Configuration: ☒

LINE SETUP

Line:	Line Enable:	Line Name:	Line Type:	Serial Type:	Vocoder Type:
1	<input checked="" type="checkbox"/>	P25 L1	Local Mode	Kenwood 5x10	TELEX 32K
2	<input checked="" type="checkbox"/>	P25 L2	Local Mode	Kenwood 5x10	TELEX 32K

Line:	Mcast Enable:	RX Mcast:	RX Port:	TX Mcast:	TX Port:	TX Group Port A:	TX Group Port B:	TTL:
1	<input checked="" type="checkbox"/>	225.8.11.81	1054	225.8.11.81	1072	0	0	6
2	<input checked="" type="checkbox"/>	225.8.11.81	1055	225.8.11.81	1073	0	0	6

IP RECORDER SETUP

Line:	Mcast Enable:	Line Name:	Vocoder Type:	Mcast Address:	Outgoing Port:	TTL:
1	<input type="checkbox"/>	Recorder 1	TELEX 32K	225.8.11.81	2250	6
2	<input type="checkbox"/>	Recorder 2	TELEX 32K	225.8.11.81	2251	6

Submit

3. Select the **Auto Configuration** check box.

Under LINE SETUP

4. From the Serial Type drop down menu, select **Kenwood 5x10**.
5. In the RX Mcast field, enter **Receive Multicast IP Address**.
6. In the RX Port field, enter the **Receive Multicast Port number**.
7. In the TX Mcast field, enter the **Transmit Multicast IP Address**.
8. In the TX Port field, enter the **Transmit Multicast Port number**.
9. Click the **Submit** button.
The changes are sent to the IP-224 in temporary storage.
10. From the left navigation, select **Per Line Setup**.
The Per Line Setup window appears.

FUNCTION TONE SETUP

Jump to Entry: << < 1 to 10 > >>

Boot Up Frequency: 1

Entry	Enable	Relay	Relay Group	Relay Time (ms)	Digital Output	CTCSS Freq	CTCSS Default	System	Chan
1	<input checked="" type="checkbox"/>	<input type="text"/>	1	0	0	0	<input type="checkbox"/>	1	1
2	<input checked="" type="checkbox"/>	<input type="text"/>	1	0	0	0	<input type="checkbox"/>	1	2
3	<input checked="" type="checkbox"/>	<input type="text"/>	1	0	0	0	<input type="checkbox"/>	1	3
4	<input checked="" type="checkbox"/>	<input type="text"/>	1	0	0	0	<input type="checkbox"/>	1	4
5	<input checked="" type="checkbox"/>	<input type="text"/>	1	0	0	0	<input type="checkbox"/>	1	5
6	<input checked="" type="checkbox"/>	<input type="text"/>	1	0	0	0	<input type="checkbox"/>	1	6
7	<input checked="" type="checkbox"/>	<input type="text"/>	1	0	0	0	<input type="checkbox"/>	1	7
8	<input checked="" type="checkbox"/>	<input type="text"/>	1	0	0	0	<input type="checkbox"/>	1	8
9	<input checked="" type="checkbox"/>	<input type="text"/>	1	0	0	0	<input type="checkbox"/>	2	1
10	<input checked="" type="checkbox"/>	<input type="text"/>	1	0	0	0	<input type="checkbox"/>	2	2

Under Function Tone Setup

11. In the System Column field, enter the **desired radio system/zone**.
12. In the Chan Column field, enter the **desired radio channel**.
13. Click the **Submit** button.

The changes are sent to the IP-224 in temporary storage.

14. From the left navigation, select **Save Parameters**.

The Save Parameters page appears.

15. Click the **Save Parameters** button.

Changes are now permanently saved to the IP-224 console.

10.0 C-Soft Designer Setup

The **Per Line Parameters** window is used to configure C-Soft to IP-224 communications.

To **configure Per Line Parameters**, do the following:

1. Open **C-Soft Designer**.
2. From the Edit menu, select **Setup Per Line Parameters**.
The Per Line Parameters window appears.

Line Number	Line Type	Line Name	Rx Multicast Address	Rx Port	Tx Multicast Address	Tx Port	Base Radio IP	TTL	Packet Delay	Echo Packets Enable	Options	Freqs	Signal Setup	SIP
1	Telex	Fire Department	225.8.11.81	1054	225.8.11.81	1254	0.0.0.0	2	10	<input checked="" type="checkbox"/>	Options	Freqs	Signal Setup	SIP
2	Telex	Sidney Police	225.8.11.81	1055	225.8.11.81	1255	0.0.0.0	2	10	<input checked="" type="checkbox"/>	Options	Freqs	Signal Setup	SIP
3	Telex	Newport Police	225.8.11.81	1056	225.8.11.81	1256	0.0.0.0	2	10	<input checked="" type="checkbox"/>	Options	Freqs	Signal Setup	SIP
4	Telex	Den Line	225.8.11.81	1057	225.8.11.81	1257	0.0.0.0	2	10	<input checked="" type="checkbox"/>	Options	Freqs	Signal Setup	SIP
5	Telex	16kb Vocoder	225.8.11.81	1058	225.8.11.81	1258	0.0.0.0	2	10	<input checked="" type="checkbox"/>	Options	Freqs	Signal Setup	SIP
6	Telex	Supervisor Line	225.8.11.81	1059	225.8.11.81	1259	0.0.0.0	2	10	<input checked="" type="checkbox"/>	Options	Freqs	Signal Setup	SIP
7	Disabled	Line 7	225.8.11.81	1060	225.8.11.81	1260	0.0.0.0	6	10	<input type="checkbox"/>	Options	Freqs	Signal Setup	SIP
8	Disabled	Line 8	225.8.11.81	1061	225.8.11.81	1261	0.0.0.0	6	10	<input type="checkbox"/>	Options	Freqs	Signal Setup	SIP
9	Disabled	Line 9	225.8.11.81	1062	225.8.11.81	1262	0.0.0.0	6	10	<input type="checkbox"/>	Options	Freqs	Signal Setup	SIP
10	Disabled	Line 10	225.8.11.81	1063	225.8.11.81	1263	0.0.0.0	6	10	<input type="checkbox"/>	Options	Freqs	Signal Setup	SIP

3. In the Rx Multicast Address field, enter the **Receive Multicast IP Address** of the connected IP-224.
4. In the Rx Port field, enter the **Receive Multicast Port number** of the connected IP-224.
5. In the Tx Multicast Address field, enter the **Transmit Multicast IP Address** of the connected IP-224.
6. In the Tx Port field, enter the **Transmit Multicast Port number** of the connected IP-224.
7. In the Base Radio IP field, enter the **IP address** of the connected IP-224.
8. Click the **Close** button.

NOTE: The Multicast settings of IP-224 and C-Soft must match for the interface to function properly. Verify the RX and TX Multicast Addresses match, as well as the RX and TX Ports.

Notes:

Suggestions or comments:

Contact technical support with suggestions or comments concerning this application note.

Technical Support:

Email: TelexDispatchtechsupport@us.bosch.com

Fax: 1-402-467-3279

Phone: 1-800-898-6723

Bosch Security Systems, Inc
8601 East Cornhusker Highway
Lincoln, Nebraska 68507