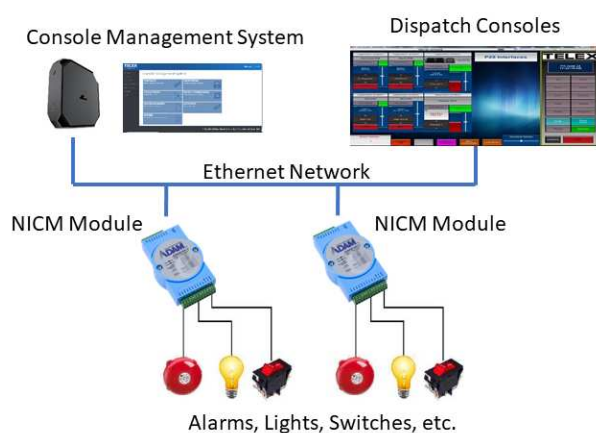


## Networkable Interface Control Module



Based on the Advantech ADAM 6000 series and integrated into the Telex Advanced Console System (TACS) are the Networkable Interface Control Module (NICM) line of products. The input / output modules are used in conjunction with our Console Management System (CMS) and provide enhanced functionality when compared to the traditional NEO-10 product. Available in 4-in/4-out, 6-in/6-out, and 12-in/6-out configurations these modules meet just about any need where contact closure sensing or output is required. Multiple modules, including different types, can coexist within the system.

### System overview



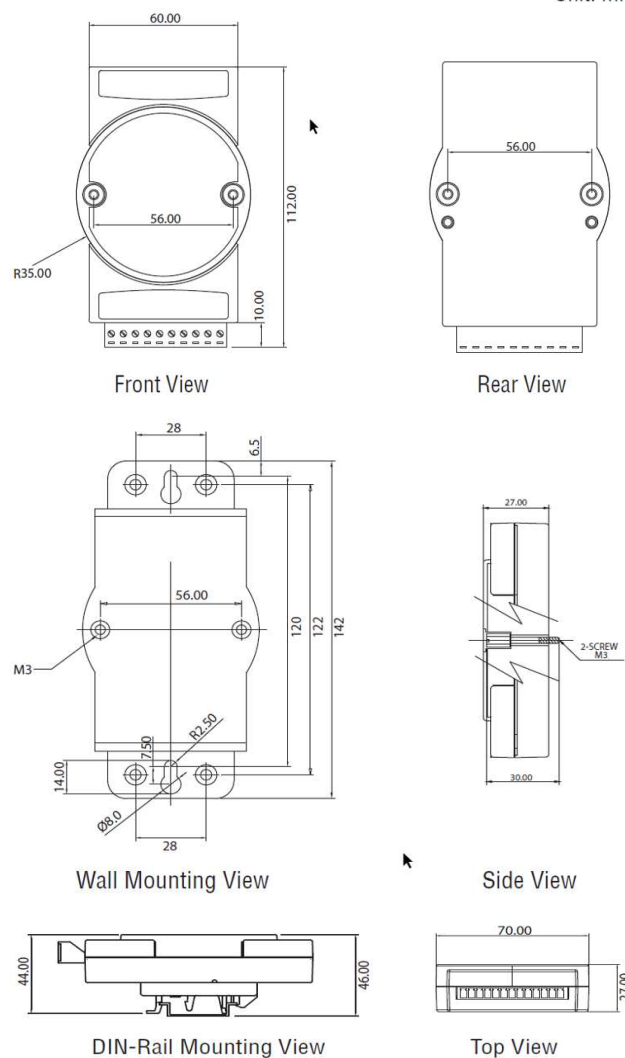
- ▶ Flexible DIN-rail or wall mount capability
- ▶ Standard 10/100 Base-T Ethernet connection via RJ-45
- ▶ Screw terminal block accepts 14 to 28 AWG wire for I/O connections
- ▶ MQTT protocol brokered through Telex Console Management System
- ▶ Controls and monitors via Telex IP-3000 series and C-Soft console

### Technical specifications

General	NICM-4-4-ADV	NICM-6-6-ADV	NICM-12-6-ADV
LAN	10/100Base-T(X)		
Power Consumption	2W @ 24 VDC		
Connectors	1 X RJ-45 (LAN, Plug-in screw terminal bloc (I/O and power)		
Power Input	10 ~ 30 VDC		
Supports	Modbus/TCP, TCP/IP, UDP, DHCP, SNMP, HTTP, and MQTT protocol		
Mechanical			
Dimensions (W x H x D)	2.76 in x 4.72 in x1.18 in (70 mm x 120 mm x 30mm)		
Enclosure	ABS+PC		
Mounting	DIN 35 rail, stack, wall		
Certification	FCC, CE, UL		
Input			
Type	Digital		
Channels	4	6	12

Dry Contact	Logic Level 0: Close to DI COM	Logic Level 0 : Close to GND	Logic Level 0 : Close to GND
	Logic Level 1: open	Logic Level 1: open	Logic Level 1: open
Wet Contact	Logic Level 0: 0 to 3 VDC	Logic Level 0: 0 to 3 VDC	Logic Level 0: 0 to 3 VDC
	Logic Level 1: 10 ~ 30 VDC	Logic Level 1: 10 ~ 30 VDC	Logic Level 1: 10 ~ 30 VDC
Supports Inverted DI Status	Yes		
Output			
Type	Relay (Form C)	Relay (Form A)	Sink (Open Collector)
Channels	4	6	6
Contact Rating (Resistive)	250 VAC @ 5A	120 VAC @ 0.5A	30 V @ 100 mA (max load)
	30 VDC @ 5A	30 VDC @ 1A	
Protection			
Isolation Voltage	2500 VDC	2000 VDC	2000VDC
Power Reversal Protection	Yes		
Environment			
Operating Temperature	-10 ~ 70°C (14 ~ 158°F)		
Storage Temperature	-20 ~ 80°C (-4 ~ 176°F)		
Operating Humidity	20 ~ 95% RH (non-condensing)		
Storage Humidity	0 ~ 95% RH (non-condensing)		

Unit: mm



### Ordering information

#### NICM-4-4-ADV IO module, 4 input, 4 output

I/O Module, 4 input, 4 output

Order number **NICM-4-4-ADV | F.01U.403.292**

#### NICM-6-6-ADV IO module, 6 input, 6 output

I/O module, 6 input, 6 output

Order number **NICM-6-6-ADV | F.01U.403.293**

#### NICM-12-6-ADV IO module, 12 input, 6 output

I/O Module, 12 input, 6 output

Order number **NICM-12-6-ADV | F.01U.403.372**

#### Represented by:

Telex Radio Dispatch  
8601 E. Cornhusker Hwy Lincoln  
Nebraska 68507  
U.S.A.  
www.telexradiodispatch.com  
www.telex.com