

Kenwood NXR-1000 AIS

Kenwood NXR-1000 AIS

Table of contents

1	Notices	4
1.1	Proprietary notice	4
1.2	Copyright notice	4
1.3	Warranty notice (limited)	4
1.4	Factory service center	4
1.5	Contact information	4
1.6	Claims	4
1.7	Warning	5
1.8	PC & Network Security consideration	5
2	Overview	6
3	C-Soft Feature Set	7
4	System Setup	9
4.1	Kenwood NXR-1000 Node Setup	9
4.2	C-Soft Designer Setup	11
5	Known Issues	15
6	Compatibility	16
7	Installation	17
8	Revision History	18

1 Notices

1.1 Proprietary notice

The product information and design disclosed herein were originated by and are the property of Electro-Voice Dynacord, LLC. Electro-Voice Dynacord reserves all patent, proprietary design, manufacturing, reproduction, use and sales rights thereto, and to any article disclosed therein, except to the extent rights are expressly granted to others.

1.2 Copyright notice

Copyright 2026 by Electro-Voice Dynacord, LLC . All rights reserved. Reproduction, in whole or in part, without prior written permission from Electro-Voice Dynacord is prohibited.

*All other trademarks are property of their respective owners.

1.3 Warranty notice (limited)

For warranty and service information, see <http://www.telex.com/warranty>.

1.4 Factory service center

Factory Service Center
Electro-Voice Dynacord, LLC
Radio Dispatch Products
140 Caliber Ridge Drive
Greer, SC 29651

1.5 Contact information

Sales

E-mail: TelexDispatch@keenfinity-group.com

Phone: (800) 289-0096

Customer service repair

E-mail: repairservice.nam@keenfinity-group.com

Phone: (800) 289-0096

Technical support

E-mail: TelexDispatchtechsupport@keenfinity-group.com

Knowledge database: <http://knowledge.keenfinity-group.com/>

Web: www.telex.com

1.6 Claims

No liability will be accepted for damages directly or indirectly arising from the use of our materials or from any other causes. Our liability shall be expressly limited to replacement or repair of defective materials.

1.7

Warning

**Notice!**

This is a class A product. In a domestic environment this product may cause radio interference, in which case the user may be required to take adequate measures.

1.8

PC & Network Security consideration

No system can be 100% protected against security threats. However, there are measures both manufacturers and users can do to help reduce the likelihood of a malicious attack resulting in either the loss of data or system takeover. We evaluate and improve our products continuously to protect against such attacks. This is only one safeguard used to reduce the likelihood of such an event. There are many more considerations needed to implement measures to strengthen your network security.

We strongly recommend the following considerations:

- Deploy Dispatch products and software on isolated networks that do not connect to other networks, when possible.
- Apply the latest Windows updates and install up-to-date IT security software.
- User rights should be properly administered using group policies to prevent unauthorized use of USB connected devices.
- If the Dispatch network must connect to other networks, install and properly maintain firewalls and intrusion detection systems.
- If Dispatch devices or computers use the Internet to connect, a VPN or tunnel connection should be utilized. Examples of such products are those made by DCB (Data Communications for Business), Cisco, and others.

**Notice!**

Bosch recommends utilizing the services of IT professionals knowledgeable about network design and security when designing, installing, and configuring dispatch networks and deploying PCs. By default, the Telex Dispatch products using the Windows operating system has Windows Update enabled along with Windows Defender (firewall and anti-virus). Disabling these features is not recommended unless it is part of an internal IT security program that uses customized security policies along with appropriate anti-virus and firewall software.

2 Overview

This document contains the installation notes for adding the Kenwood NXR-1000 AIS interface option to C-Soft 8.500. The document describes the NXR-1000 AIS feature set and how to configure the AIS interface between the NXR-1000 Node and C-Soft. CSoft IP address for the AIS repeater must match along with the Group IDs that is programmed in the NXR-1000 repeater.

3 C-Soft Feature Set

The C-Soft NXR-1000 AIS interface currently supports the following feature set for Kenwood NXR-1000:

- Supports connection to up to 20 AIS compatible repeaters
 - Each repeater connection is configured with a name, IP Address, System Type, Vendor, Connection Port (e.g. NXR1800, 172.19.50.80, Conventional, Generic, 5060), Authentication Password, and Registration interval.
- Supports up to 24 AIS Interface lines
 - An AIS Interface line connects to a specific repeater. The line is configured with a connection, type (group or individual), and a list of affiliated group or individuals.
 - Each line can be configured to accept audio from one to 100 talkgroups.
- Send and Receive Group Calls
 - Group Call is sent by selecting the corresponding frequency button and then pressing either the InPTT or Main PTT button
 - The Select button displays ANI and/or Alias of incoming calls
- Send and Receive Individual Calls
 - Individual Call is sent by selecting the corresponding frequency button and then pressing either the InPTT or Main PTT button
 - The Select button displays ANI and/or Alias of incoming calls
- Send Annunciations
 - Send audio from .wav file on an AIS line using the Annunciation button
- Cross patching
 - CSoft can crosspatch audio from an AIS line to any another line type that is supported by C-Soft
- Receive Emergency Notifications
 - CSoft supports receiving both Emergency Calls and Emergency Alerts
- Send and Receive Text Messages
 - Text Messages can be sent to a group but not to an individual.
- Send Radio Enable/Disable Commands
 - Radio Enable/Disable commands are sent by selecting a user from the Keypad control and then clicking either the Radio Enable, or the Radio Disable button.
 - Radio Enable/Disable commands can only be sent on lines configured for Individual operation.
- Send Radio Check Command
 - Radio Check command is sent by selecting a user from the Keypad control and then clicking the Radio Check button.
 - Radio Check command can only be sent on lines configured for Individual operation.
- Send Remote Monitor Command
 - Remote Monitor command is sent by selecting a user from the Keypad control and then clicking the Remote Monitor button.
 - Remote Monitor command can only be sent on lines configured for Individual operation.
- Indication of parallel console transmissions
 - Parallel Consoles are configured in C-Soft Designer by going to Edit-> Setup Global Parameters -> Local Consoles and entering the subscriber IDs of the parallel consoles in the Direct IP Console Subscriber IDs field.
 - Calls initiated from parallel dispatch consoles will display the 'T' icon on the receiving line's Select button.
- Cross muting of parallel consoles

- Calls from parallel consoles can be automatically muted by enabling the **Crossmute direct IP console subscriber IDs** field in Edit-> Setup Global Parameters -> Local Consoles.
- When this option is enabled, calls initiated from parallel dispatch consoles will display the 'XT' icon on the receiving line's Select button
- GPS Support

GPS Feature	NXR-1000
GPS Read (Standard Location Immediate Request)	X
GPS Trigger On (Triggered Location Reporting Request)	X
GPS Trigger Off (Triggered Location Reporting Stop Request)	X
Incoming GPS Data triggered from Radio	X
Incoming GPS Data triggered from Emergency Alarm	X
Incoming GPS Data triggered from Emergency Call	✓
GPS data during voice calls	✓

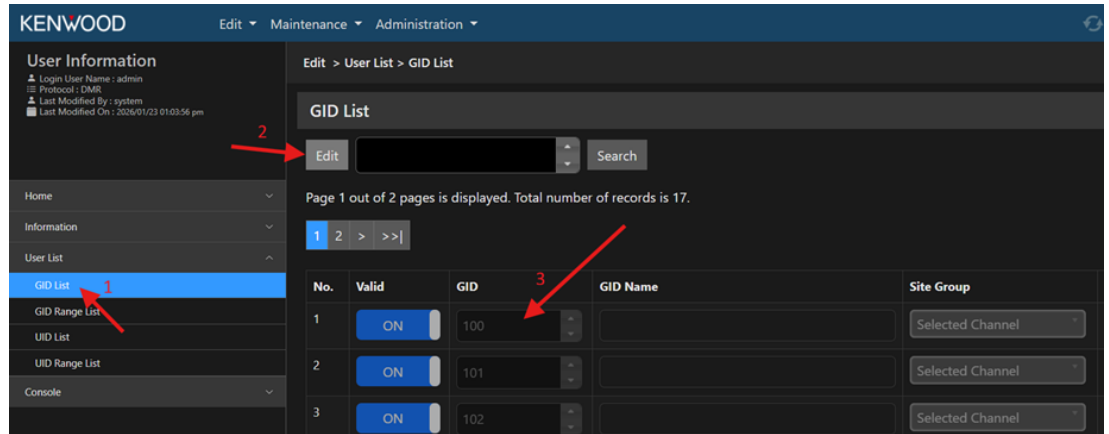
4 System Setup

To set up the Kenwood NXR-1000-AIS interface, you must configure both the Kenwood NXR-1000 Node and the C-Soft Designer for AIS operation.

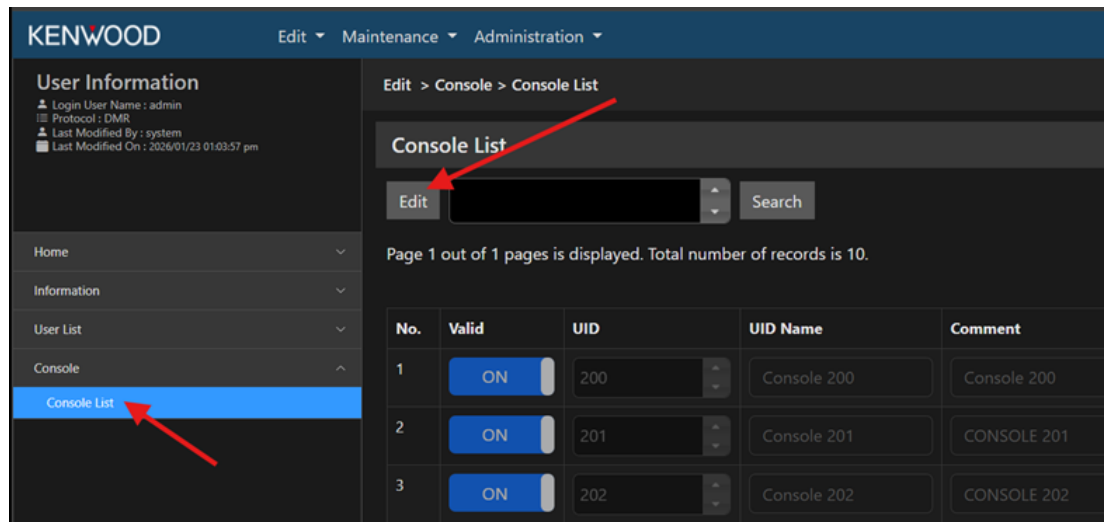
4.1 Kenwood NXR-1000 Node Setup

Set up the Kenwood NXR-1000 Node

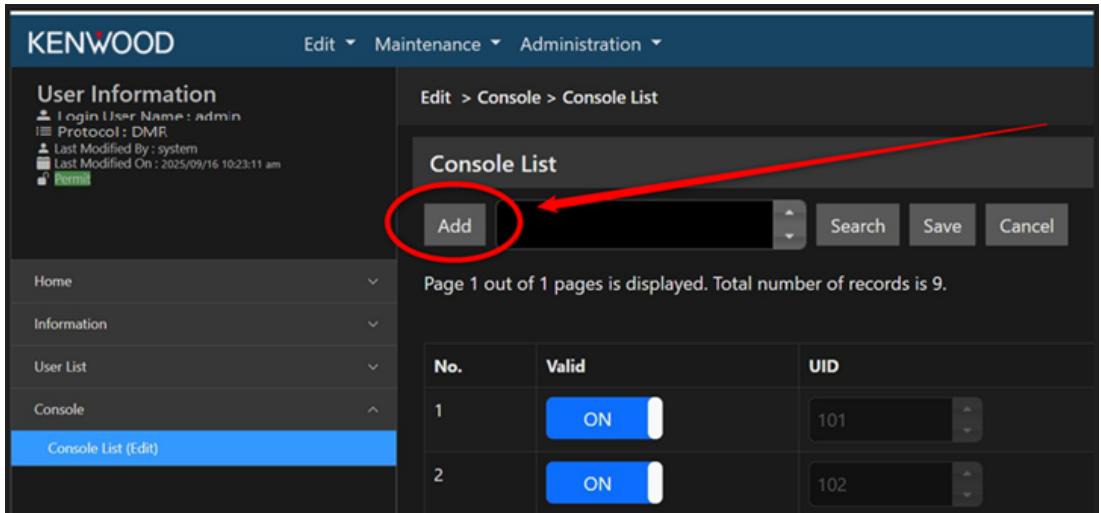
1. Open a web browser and enter the IP address of the Kenwood NXR-1000 repeater to access its webpage.
2. From the Edit menu, select **User List**.
In this section you will program all of your Group IDs.
3. In the GID List, add the **Group IDs** for you radio mobiles.



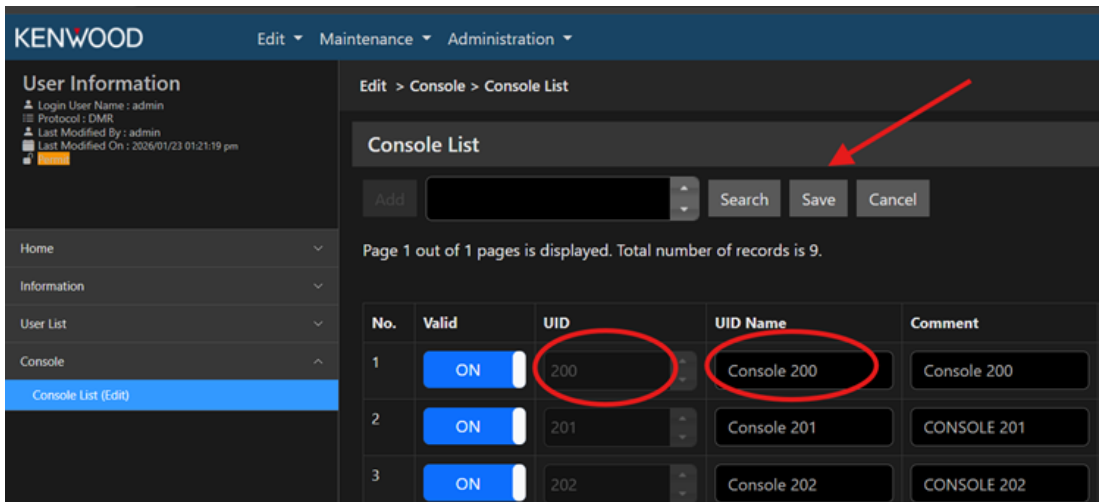
4. From the left navigation, click **Console** to open the section where you add Console IDs. Each repeater supports a maximum of 10 Console IDs.
5. Open the **Console List**.
6. Click **Edit**.



7. Click **Add**.



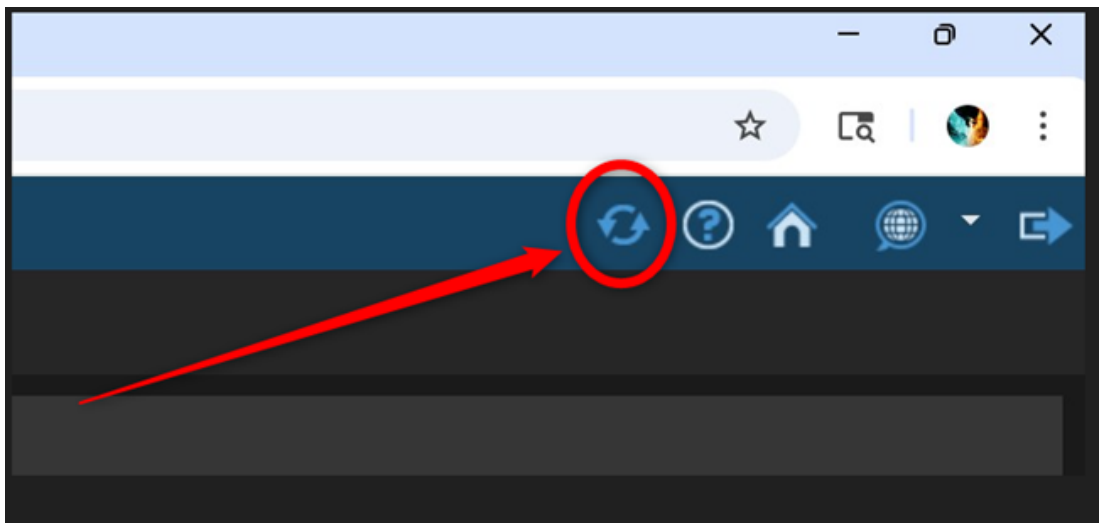
8. Enter the **Console ID**.

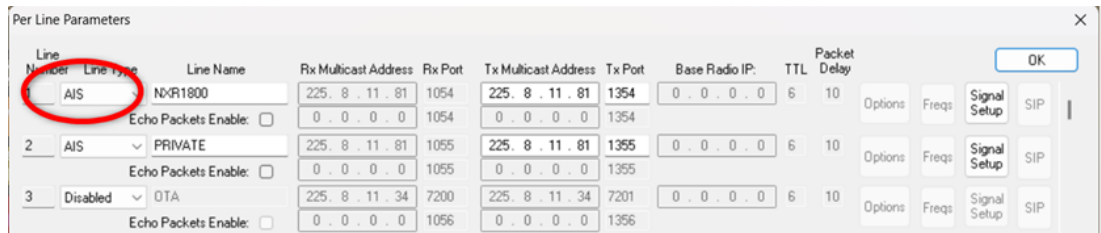


9. Assign a **UID Name**.

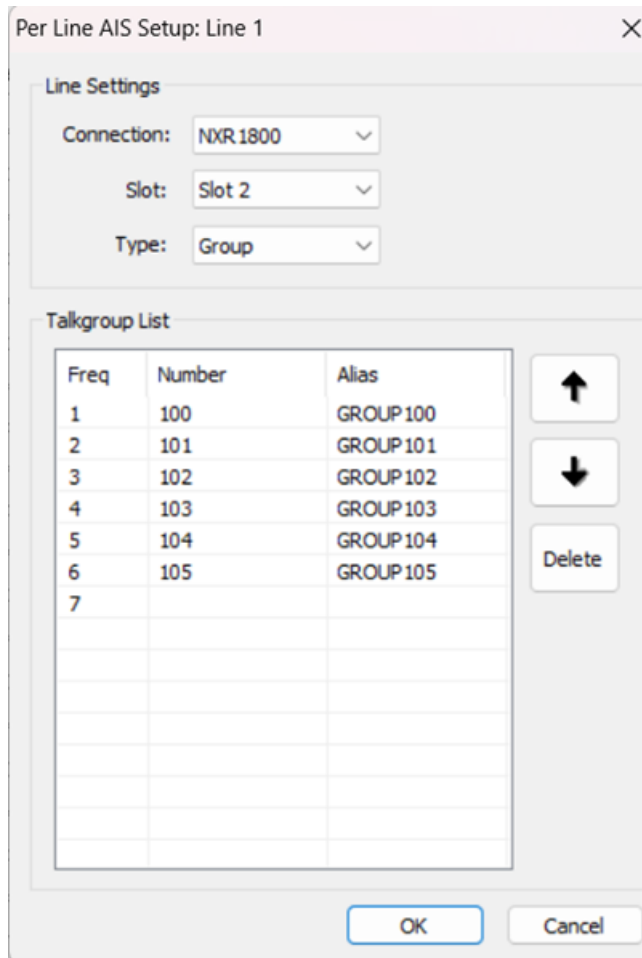
10. Click **Save**.

After you create all Console IDs and Group IDs (you create Group IDs using the same steps as Console IDs), complete the setup by writing the configuration to the NXR-1000 repeater. Click the two arrows pointing toward each other in the upper-right corner of the window to write the settings.





9. Click the line's **Signal Setup** button to open the Per Line AIS Setup window.



10. In the Connection field, select the **NXR-1000 connection** if you created more than one connection type.

11. In the Slot field, choose the **slot configured earlier in the NXR-1000**.

12. In the Type field, select **Group** or **Individual**.

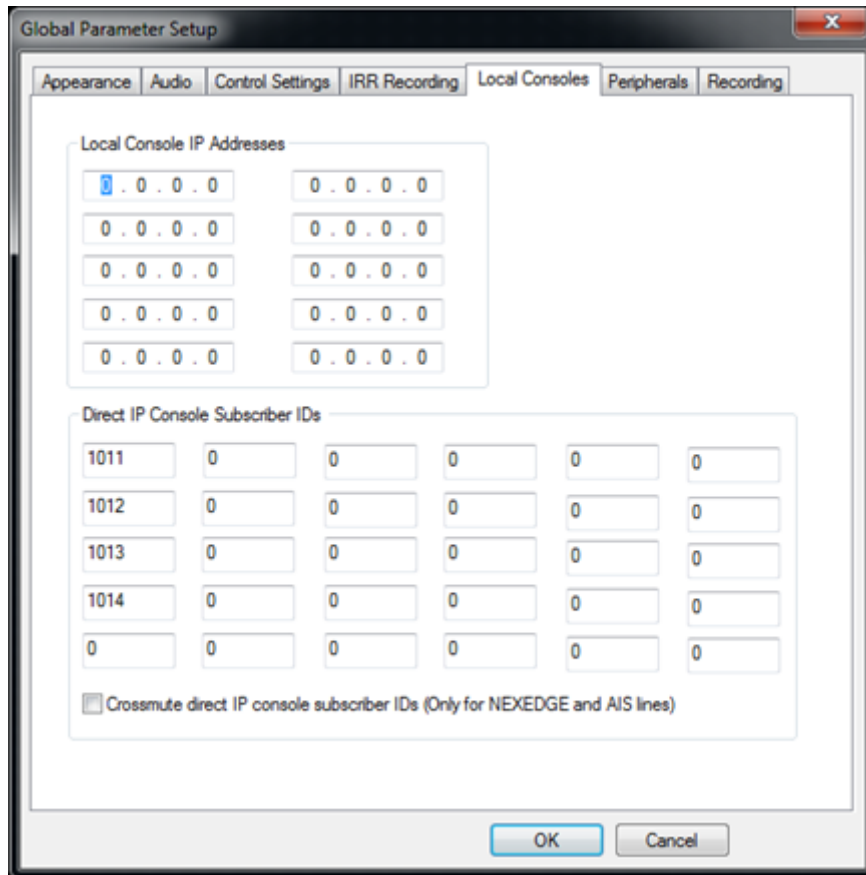
- Group lines let you send and receive calls from DMR Talkgroups and exchange group text messages.
- Individual lines let you send and receive individual calls and perform individual radio command operations. (You cannot send individual commands on Group lines.)

13. In the Talk Group List, enter **one or more group contacts**.

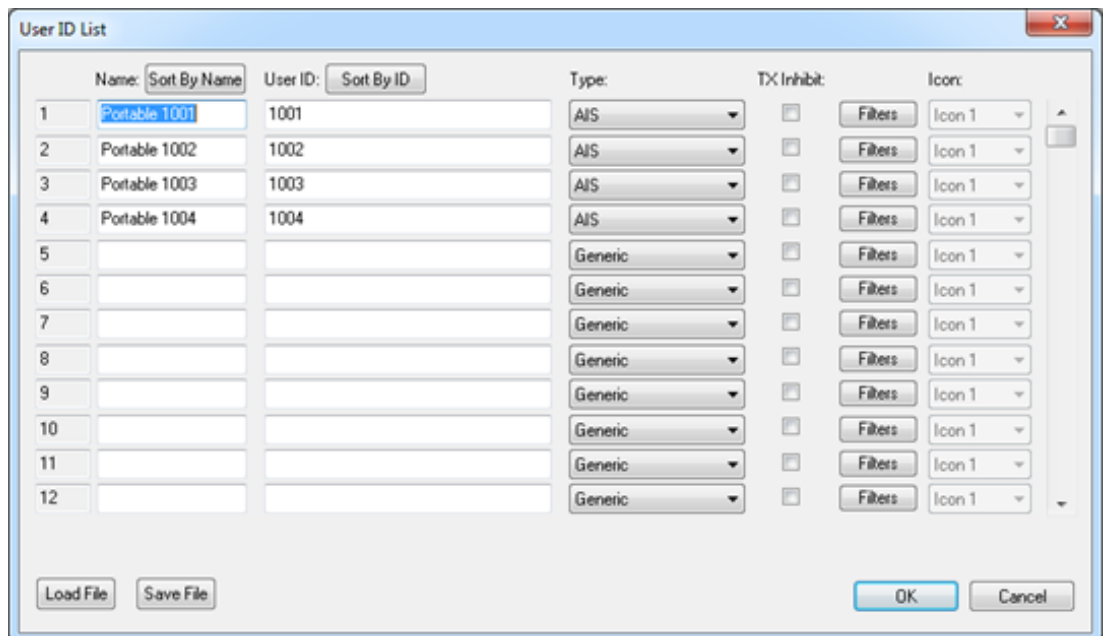
For Individual lines, enter one or more individual contacts in the Individual List. These contacts map to frequency numbers available in the C-Soft Frequency controls.

14. Click **OK** to close the Per Line AIS Setup window.

15. Go to **Edit | Setup Global Parameters | Local Consoles**.



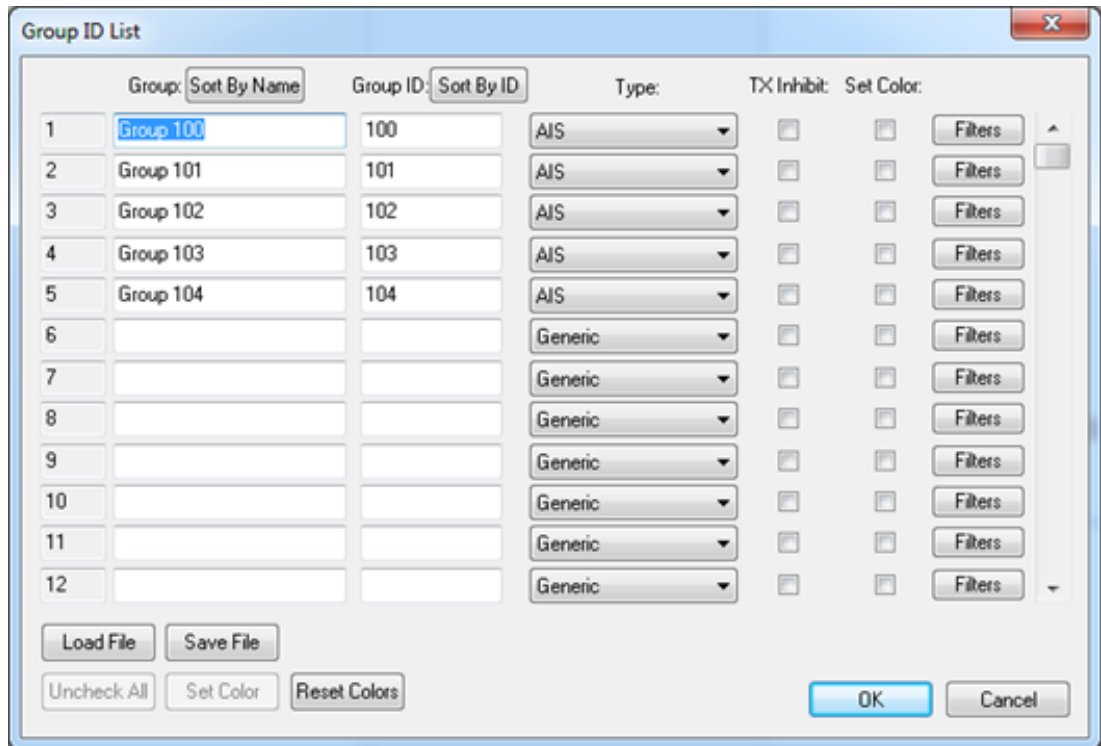
16. Enter the **subscriber IDs of parallel consoles** in the Direct IP Console Subscriber IDs field.
17. Click the **Crossmute Direct IP Console Subscriber IDs check box** if the console should not play transmit audio from parallel consoles.
18. Click **OK** to close the Global Parameter Setup window.
19. Go to **Edit | Edit User ID List**.



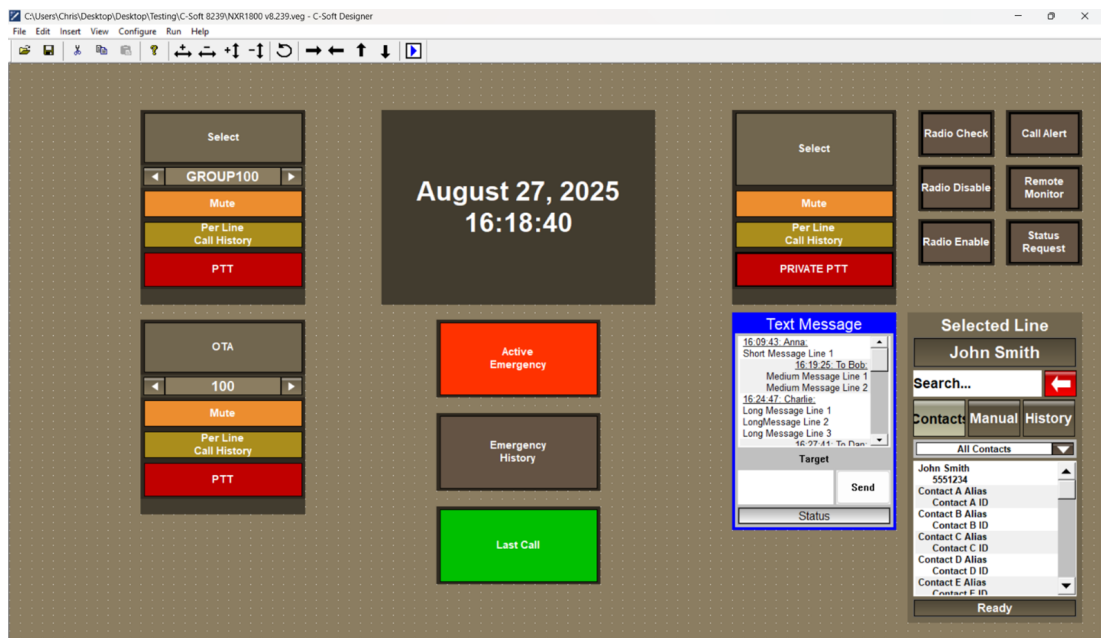
20. Enter the **name** and **User IDs** of each individual radio in the DMR system.
21. Set the Type to **AIS**.

C-Soft uses the User ID list to alias IDs for incoming calls and to populate the Keypad control.

22. Click **OK** to close the User ID List.
23. Go to **Edit | Edit Group ID List**.



24. Enter the **name** and **Group IDs** of each Talkgroup in the DMR system.
25. Set the Type to **AIS**.
C-Soft uses the Group ID list to alias incoming calls and populate the Keypad control.
26. Click **OK** to close the Group ID List.
27. Save the **.veg file**.
28. Run **C-Soft Runtime**.



5 Known Issues

The C-Soft Kenwood NXR-1000-AIS interface currently does not support the following features:

- Intercom operation on AIS lines
- PCMU (0) or PCMA (8) vocoder
 - C-Soft currently only supports the DMR-AIS 100 (AMBE+2) vocoder.
- Changing Wide Area Groups from the console
- Text Messaging only works on Group calls at this time.
- The limit of 20 repeaters and 24 lines in C-Soft is going to limit the number of group calls or individual call lines you can set up in C-Soft. Each repeater can make both group calls and individual calls. We use one line in C-Soft for each type of call.

6 Compatibility

- Compatible with Kenwood NXR-1000 Controller Node version 2.30.00 for Kenwood NXR-1000 Conventional systems.
- Compatible with ADHB-4 Version 3.600 and HWV2 1.200
- Compatible with Telex Activation License Tool Version 1.800
- Compatible with C-Soft 8.500 and Higher

7

Installation

To install C-Soft on Windows 11:

1. Double-click **C-Soft_Setup_v8500.exe** to start the installer.
2. Follow the **on-screen instructions** to install C-Soft.
3. When the installer prompts you to update the ADHB-4 drivers, follow the **instructions** to complete the ADHB-4 Driver Installation. If the latest ADHB-4 drivers are already installed, skip this step.
4. When prompted, install the **Telex License Server**, which C-Soft requires to obtain and maintain licenses.
 - If needed, the Telex License Server Installer will also install the Microsoft Visual C++ 2012 Redistributable package. If the redistributable is already installed, skip this step.

Contact Telex Technical Support as needed to obtain license Entitlement Certificates. Refer to the C-Soft manual appendix titled “Telex License Activation Tool” for details on license requirements, activation procedures, and licensing architecture.

To upgrade C-Soft:

- ▶ Locate the appropriate version of C-Soft installation package to install C-Soft.

8 Revision History

Revision	Date	Author	Description
03	02/13/2026	Technical Support	NXR-1000 AIS setup for C-Soft

The logo for TELEX, featuring the word "TELEX" in a bold, white, sans-serif font with horizontal lines above and below the letters, set against a blue background.

Electro-Voice Dynacord LLC

130 Perinton Parkway

Fairport, NY 14450

USA

www.telex.com

© Electro Voice Dynacord 2026

EU importer:

EVI Audio GmbH

Sachsenring 60

94315 Straubing

Germany

© EVI Audio GmbH, 2026

202602132035